

ATV Revenger



Instruction Manual

CE

Before using the product for the first time, it is important that you carefully read the accompanying instructions. It is essential that you handle the product correctly to prevent damage. Important basic rules for the electric car are to never deeply discharge the batteries and to avoid moisture.

1. THIS ELECTRIC CAR, CHARGER AND REMOTE CONTROL ARE MANUFACTURED IN ACCORDANCE WITH THE FOLLOWING EU DIRECTIVES:

2009/48/EC, 2006/95/EC, 2014/30/EU, 2011/65/EU and 2005/84/EC.

2. TECHNICAL INFORMATION:

Dimensions (LxWxH): 103 x 68 x 73 cm

Battery type: 1 x lead-acid battery 12V 7Ah

Motor: 12V, 2 x 35W (70W)

Top speed: Approx. 5 km/h*

Charger input: 230V 50Hz AC

Charger output: 12V DC

Charging time: 8-12 hours

Travel time per charge: Up to 1 hour*

Maximum load weight: 30 kg

Remote control type: Digital 2.4G, range 10-15 m.

*= Operating time and speed vary depending on factors such as driving style, driving surface, load weight, air temperature, etc. (See point number 7.)

3. EXPLANATION OF SYMBOLS CHARGER AND ELECTRIC CAR:



For indoor use only



Double insulated



Polarity



Not for children under 3 years of age



Leave to Recycling

4. SAFETY INSTRUCTIONS - CHARGING AND BATTERY:

- Feel free to test the car after installation, but before using the product for the first time, the battery must be charged for 10 hours.
- Never deep charge the battery. As soon as the battery starts to lose power, it needs to be charged. If the battery charge level falls below 30%, the batteries may be damaged.
- Only charge in a well-ventilated, dry and cool environment.
- Never cover the charger with anything.
- Never charge the battery for more than 12 hours at a time.
- Never leave the product unattended while charging.
- Never allow children to charge the battery on their own.
- Unplug the charger from the wall socket and the product after charging is complete.
- Never short-circuit the battery.
- Regularly check that the cables to the battery and charger are undamaged and that no connection contacts are loose.
- Never expose the battery to temperatures above 40 degrees Celsius or below minus 5 degrees Celsius.

LONG-TERM STORAGE: Charge the batteries before storage and maintain them once a month to prevent damage.

5. CHARGING THE ELECTRIC CAR:

- Keep the car turned off.
- First, plug the charger into the battery socket on the car and then connect the charger to the wall socket.
- Charge the battery for approximately 10 hours before first use. Do not charge the battery for more than 12 hours to avoid overheating the charger.
- The charger will become warm during charging. If it becomes very hot, stop charging and unplug the charger from the socket. Check both the battery and the charger.
- Only use the charger in dry areas.
- Cables and connections to the charger and battery must be checked regularly. If damage is detected, neither the battery nor the charger may be used until the damage has been repaired.
- When the battery is fully charged, disconnect the charger. Store the charger in a dry and cool place.

6. USE:

- All use must be supervised by an adult.
- Children under 3 years of age should not use the product on their own.
- This electric car is intended for use on flat surfaces such as pavements, garage driveways or playgrounds. Never use the car in busy areas and never drive on the street. If you are driving on uneven surfaces such as grass, gravel or slopes, it is important to be aware if the motor sounds strained. **If the electric car continues to be used despite the motor being overworked, there is a risk that the motor will overload and break down.**
- Never drive on busy roads, near cliffs, stairs, swimming pools or other areas with waterways.
- The vehicle must never be used on wet surfaces or in the rain. Always store the vehicle in a dry environment when not in use.
- Never drive in the dark or in poorly lit areas.
- Clean the vehicle by wiping it with a slightly damp cloth. Never submerge the vehicle in water or spray it with a hose.
- Do not exceed the maximum load of 30 kg.
- The child must be seated before the accelerator pedal is pressed.
- Always stop the vehicle before changing direction to drive forwards or backwards.
- Plastic bags pose a choking hazard to small children. Remove all packaging material after unpacking.

7. OPERATING TIME AND PERFORMANCE:

Operating time and speed vary depending on a number of different factors. Optimal performance is achieved at an air temperature of around 20 degrees, on hard, flat surfaces with a light driver. Cold weather has a very negative effect on battery performance. Driving style also has a significant impact on operating time; avoiding repeated starts/stops and not using the product's faster speed modes will result in longer operating time.

8. WASTE DISPOSAL:

Sort packaging materials according to local regulations. Used electrical and electronic products, including all types of batteries, must be taken to a designated collection point for recycling.

(According to Directives 2012/19/EU and 2006/66/EC).



ASSEMBLY INSTRUCTIONS

Parts included in the box:



Bakre hjulaxel



Framhjul



Bakhjul



Navkapslar



Styre



Nackstöd



Främre hjulupphängning



Fjärrkontroll



Laddare



Manual



Skruvnyckel



Brickor



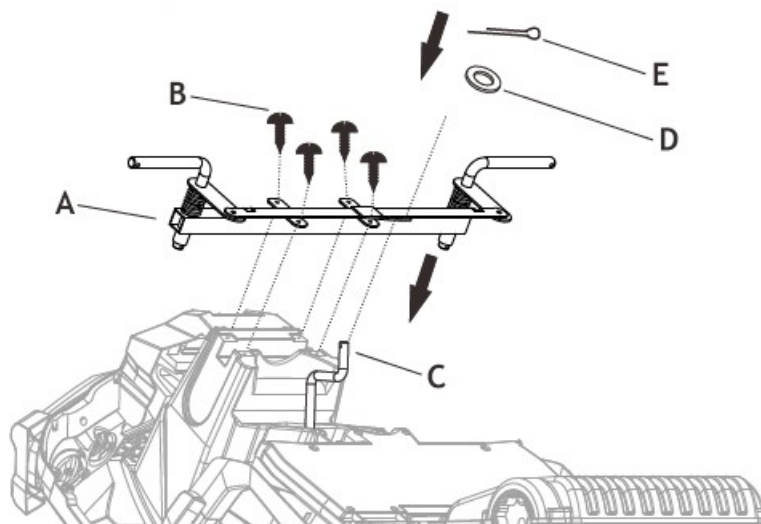
Sprint



Skruv

NOTE: The charger and remote control are located under the seat.

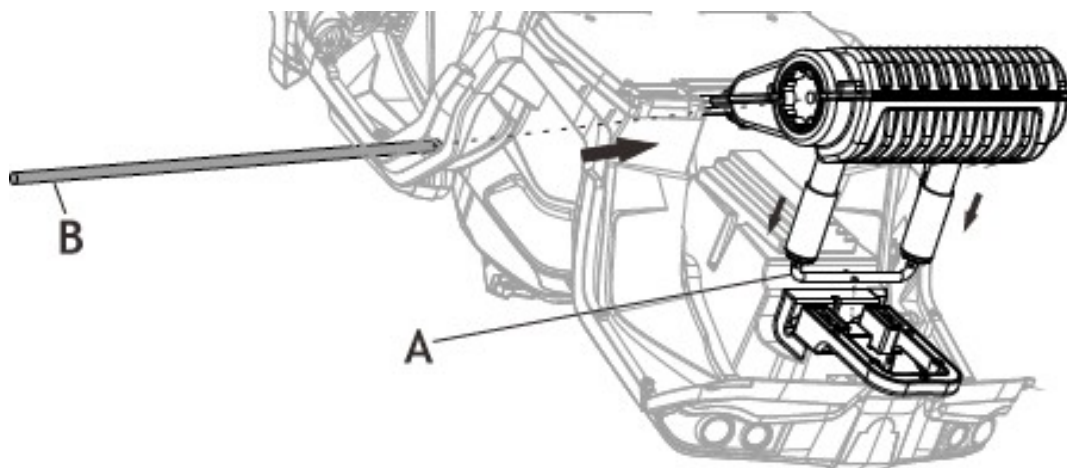
Step 1: Assemble the front wheel suspension



Turn the ATV Revenger upside down.

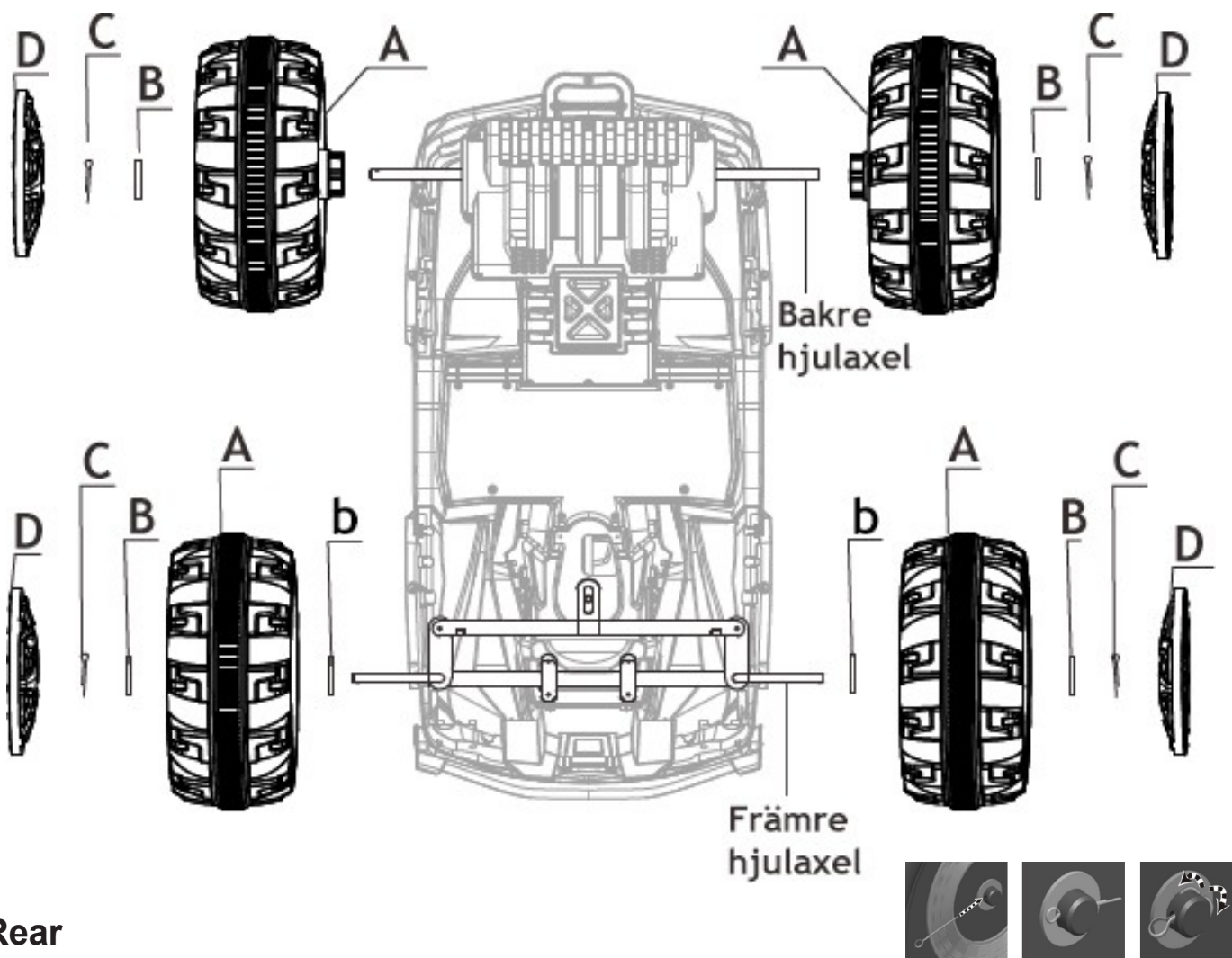
- 1) Place the front wheel suspension in its position on the body (A).
- 2) Secure the suspension with 4 screws (B).
- 3) Ensure that the steering rod is aligned in the correct position (C).
- 4) Place a washer (D) on the steering rod, outside the wheel suspension.
- 5) Insert a pin (E) into the steering rod to secure the wheel suspension.

Step 2: Fit the rear wheel axle



- 1) First, press the swing arm into position (A).
- 2) Then insert the rear wheel axle through the hole (B) and ensure that the same amount of the wheel axle protrudes on both sides.

Step 3: Fit the wheels



Rear wheels:

- 1) Fit the rear wheel (A) onto the rear wheel axle.
- 2) Place a washer (B) on the outside of the wheel.
- 3) Secure with a pin (C) and bend into an M shape, see image.
- 4) Finish by clicking the hub cap onto the wheel.

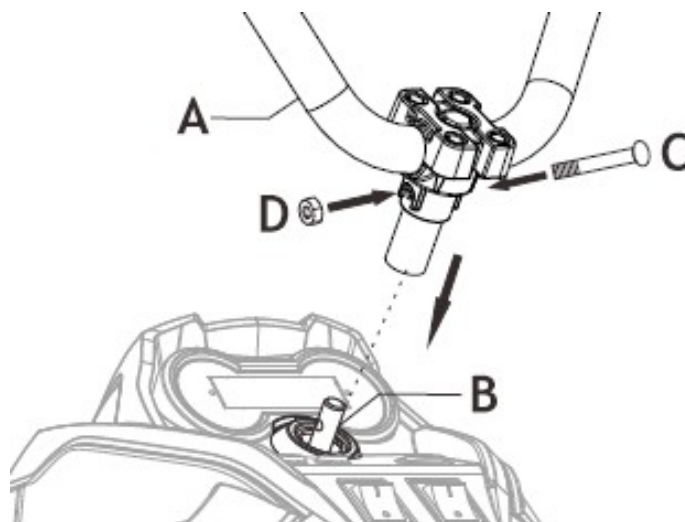
Perform these steps for both rear wheels.

Front wheels:

- 1) First, place a washer (b) on the front wheel axle.
- 2) Mount the front wheel on the axle (A).
- 3) Place a washer (B) on the outside of the wheel.
- 4) Secure the wheel with a pin (C) and bend it into an M shape, as shown above.
- 5) Finish by clicking the hub cap onto the wheel.

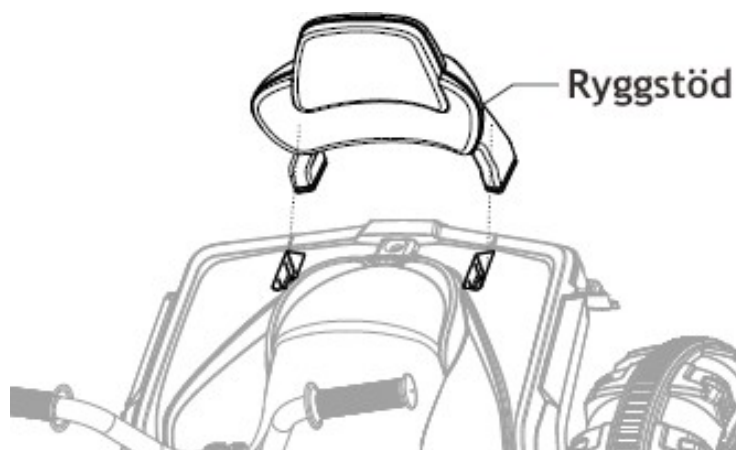
Perform these steps for both front wheels.

Step 4: Fit the handlebars



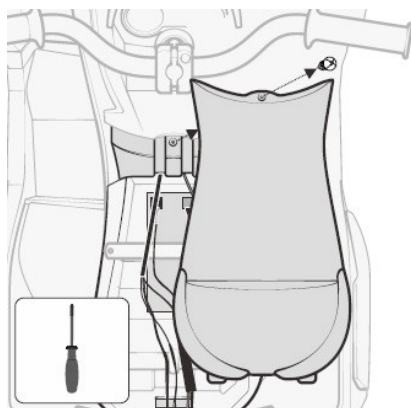
- 1) Place the handlebar (A) on the handlebar stem (B).
- 2) Insert the bolt (C) and secure with a nut (D).

Step 5: Fit the backrest

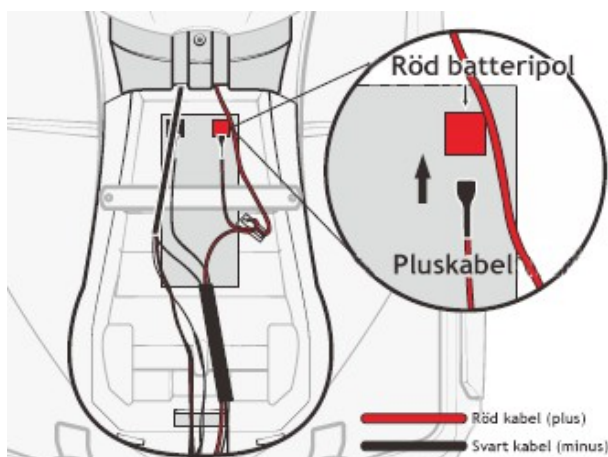


Place the backrest in position on the ATV and click it into place.

Step 6: Remove the seat and disconnect the battery



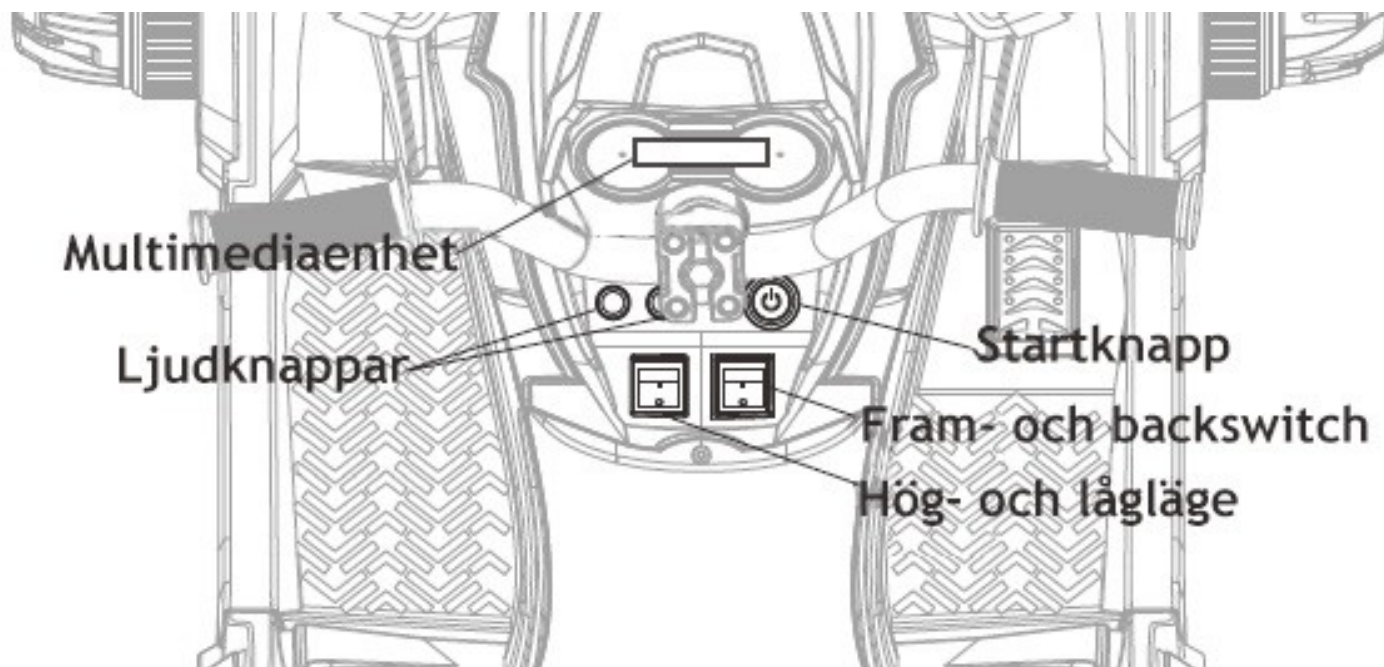
Remove the screw that holds the seat in place using a screwdriver. Remove the charger and remote control.



Connect the red positive cable to the red battery terminal on the battery.

Then replace the seat and tighten the screw to secure the seat again.

Instrument panel



Multimedia unit: Multimedia unit for playing music. See instructions for the unit on the next page.

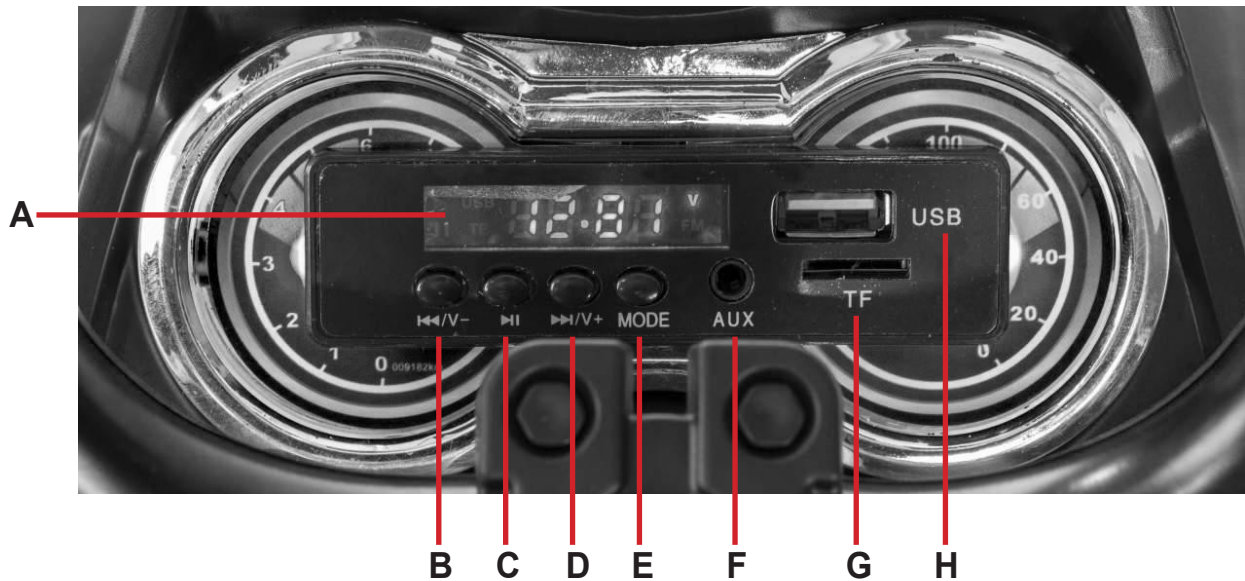
Sound buttons: Press the buttons to honk the horn and play Revenge's sound effects.

Start button: Press the start button to start and turn off the ATV.

Forward and reverse switch: Select whether the Revenger should drive forwards or backwards.

High and low mode: Select whether the top speed should be approximately 2-3 km/h or approximately 5 km/h.

Multimedia unit



A: Display with voltmeter: The display has a voltmeter that shows the voltage in the car's batteries. When the car is newly charged and fully charged, it should show between 13.1-13.3. At around 12.0V, the battery is discharged. NOTE: It is normal for the voltmeter to show a value lower than 12.0V during operation.

B: Previous track/Volume down: Press briefly to change track or channel, press and hold to lower the volume.

C: Play/Pause button: Press to play or pause the music.

D: Next song/Increase volume: Quick press to change song or channel, long press to increase volume.

E: MODE: Switch between the different music modes.

F: AUX input: Connect a device with an AUX cable to play audio files.

G: Memory card reader: Insert a memory card to play audio files.

H: USB input: Connect a device with a USB cable to play audio files.

Manual operation

Sit down on the vehicle and press the start button to start the electric car. Use the forward and reverse switch to select whether the car should drive forwards or backwards, and what speed it should go at using the high and low speed buttons. Use the steering wheel to turn right and left.

Even when using it manually, you as a parent can set the speed of the car using the remote control.

Driving with the remote control

Insert batteries into the remote control. Do not mix different batteries (new/old/different brands).

2.4G remote control: These remote controls can be recognised by the fact that they do not have an external radio antenna. You do not need to make any settings on the electric car to be able to use a 2.4G remote control, as it always overrides the car's manual controls. However, you need to pair the control with the car before it will work. This needs to be done when using it for the first time, as well as when the batteries are replaced.

The remote control has buttons for driving forwards and backwards and turning right and left. These are normally marked with arrows. There is also a button for pairing the remote control with the electric car, a button for stopping and a button for switching between different speed modes.

CODE - Pairing button: This button is used when pairing the remote control with the car. See the next page for instructions on how to perform the pairing.

S - SPEED SELECT: Use this button to switch between the car's speed modes.

Pairing the remote control with the car

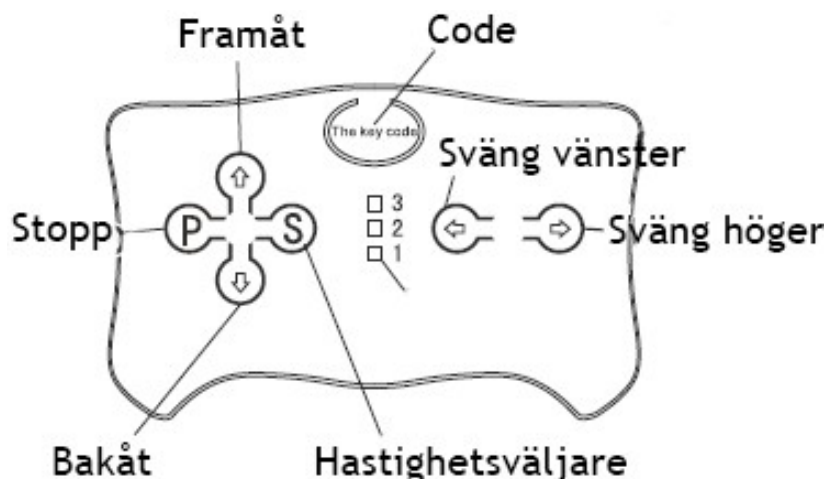
Step 1: Switch off the car.

Step 2: Press and hold the button in the centre at the top of the remote control for a few seconds until the remote control starts flashing.

Step 3: Start the car.

The remote control is now paired with the car. This procedure needs to be performed the first time you pair the remote control with the car, and then whenever you change the batteries in the remote control.

The remote control has a range of approximately 10 metres. The range is intentionally relatively short, as it is important that you as a parent always keep a close eye on your child when they are using the electric car.



Safety

The car has an automatic fuse located near the batteries. The fuse can be triggered when the car becomes too heavy.

To avoid tripping the fuse:

- Do not load the car with more than 30 kg.
- Do not drag any objects behind the car.
- Ensure that no moisture comes into contact with the car's electronics.
- Do not reconnect the electronics.

If the car is driven uphill and off-road, the fuse may be triggered if the load is too heavy, for example on steep inclines or in thick grass. If the problem persists even when the car is driven on flat, hard surfaces, contact your dealer for support.

TROUBLESHOOTING

Problem: The car does not move.

Solution 1: Check that the charger is properly disconnected from the charging port.

Solution 2: A battery cable/connector is not properly connected. Check for loose connections by pressing/wiggling the battery cables/connectors located under the seat.

Solution 3: The battery has insufficient power; charge the battery for 8-12 hours. Do not exceed 12 hours.

Problem: The car only works for a short period of time.

Solution 1: The car's battery is not charged. Please charge for 8-12 hours, but not more than 12 hours.

Solution 2: The battery is outdated or damaged. Replace the battery with a new one; contact your dealer for this.

Solution 3: The battery is not charging. Check that the charger is working.

Problem: The sound is not working.

Solution: Please check the volume setting and that the AUX input cable is not connected. The car's normal sound effects will not work if an AUX cable is connected.

Problem: The remote control is not working.

Solution 1: Try pairing the remote control with the car again.

Solution 2: Replace the batteries in the remote control and pair it with the car again.

Solution 3: Move closer to the car.

Problem: The charger emits a buzzing sound during charging.

Solution: This is normal, no action is required.

Problem: The charger overheats.

Solution: It is normal for the charger to become warm during charging, but it should not become hot. In such cases, check the voltage of the battery/charger.

NOTE

The battery should be fully charged before each use. Please read the instruction manual carefully before using the product.

- An adult should assemble and install the product.
- The car must not be used in traffic.
- Children using the car should always wear a helmet and protective clothing.
- An adult should supervise at all times when the car is in use.
- Only an adult may charge the battery.

Please keep the manual and any other information for future reference.